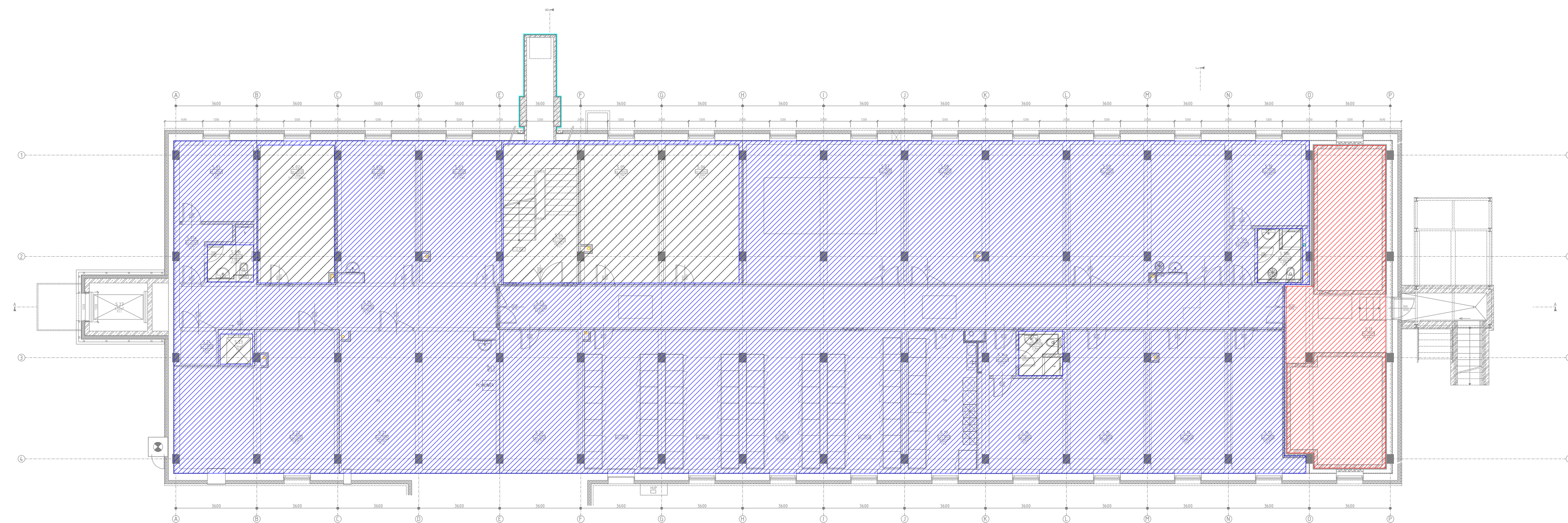
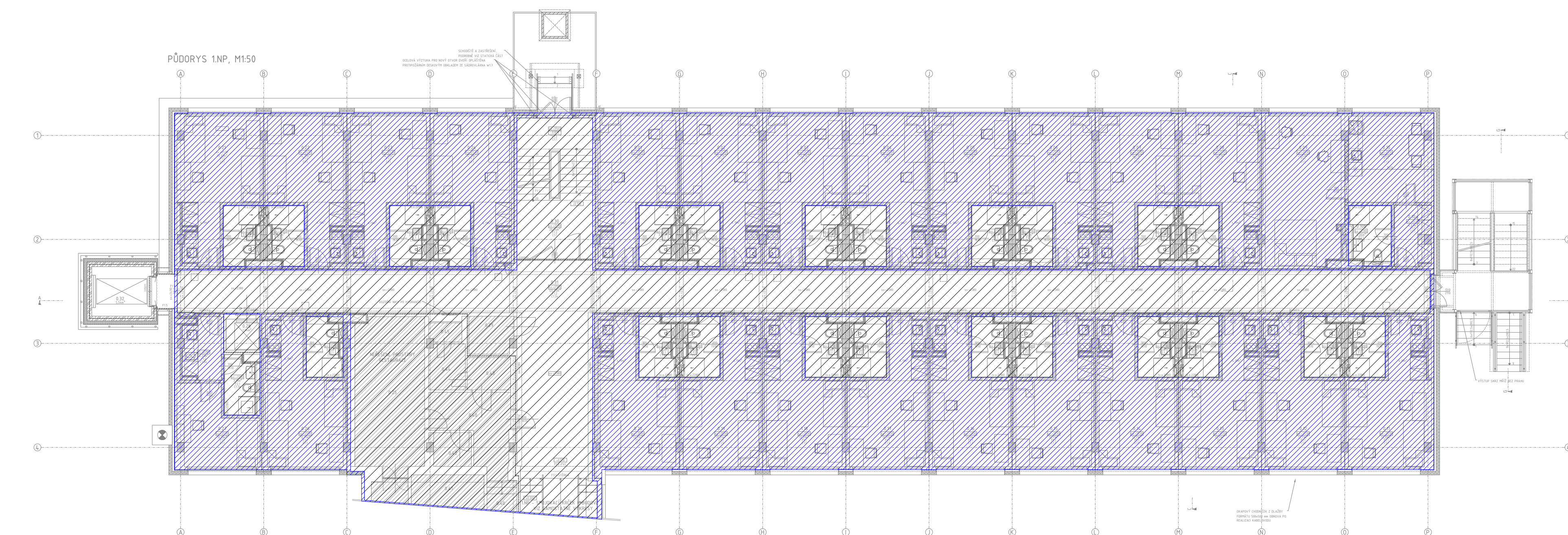


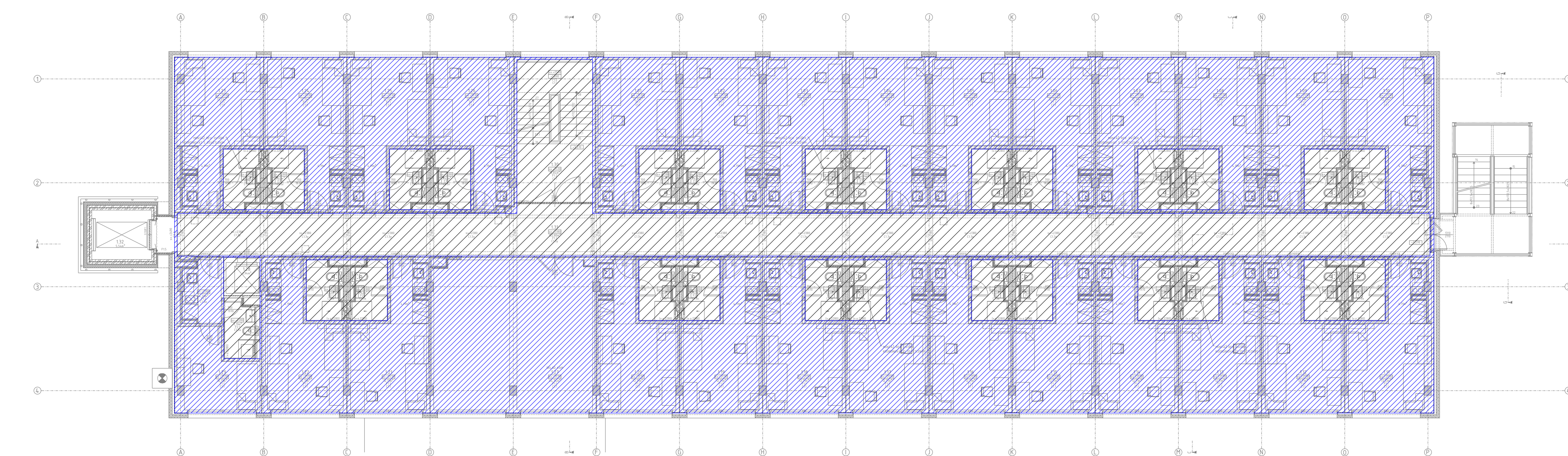
1.PP



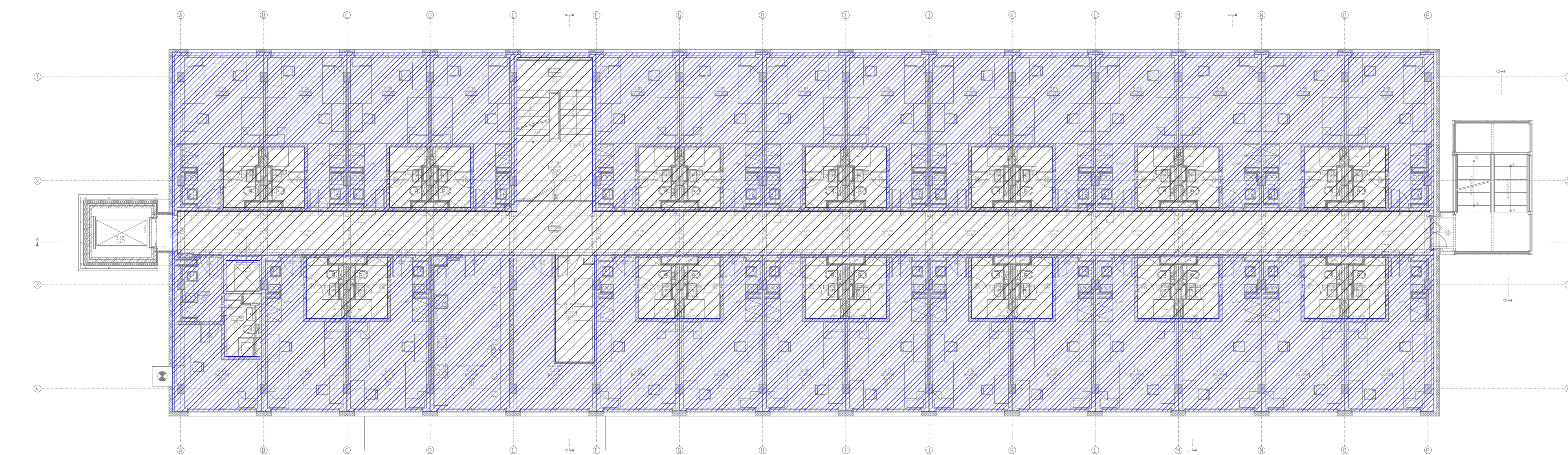
1.NP



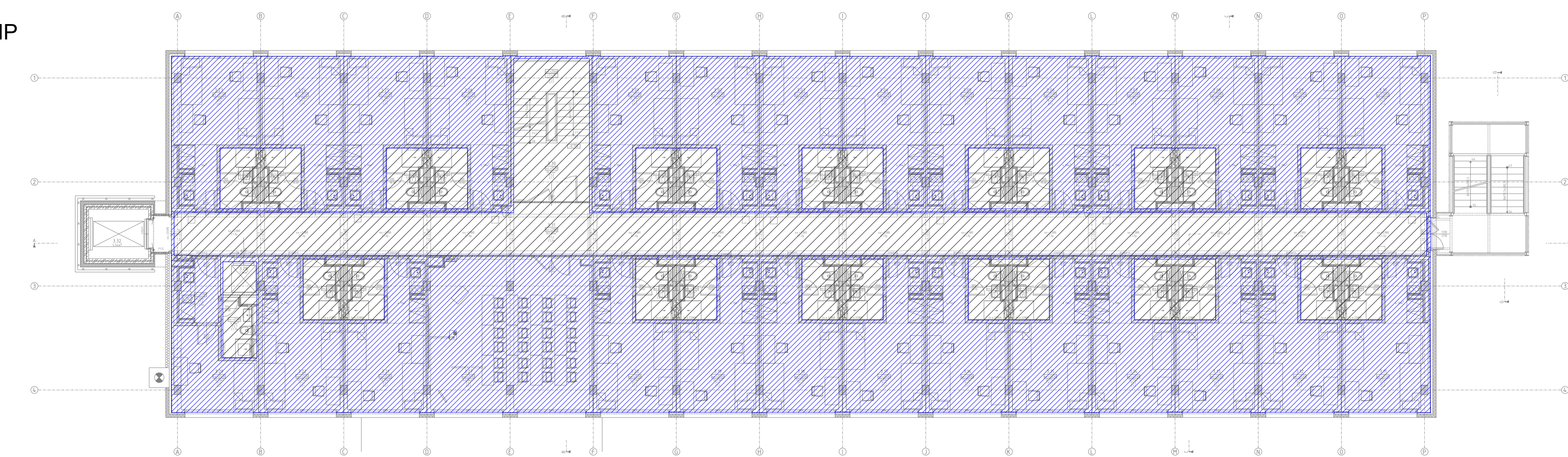
2.NP



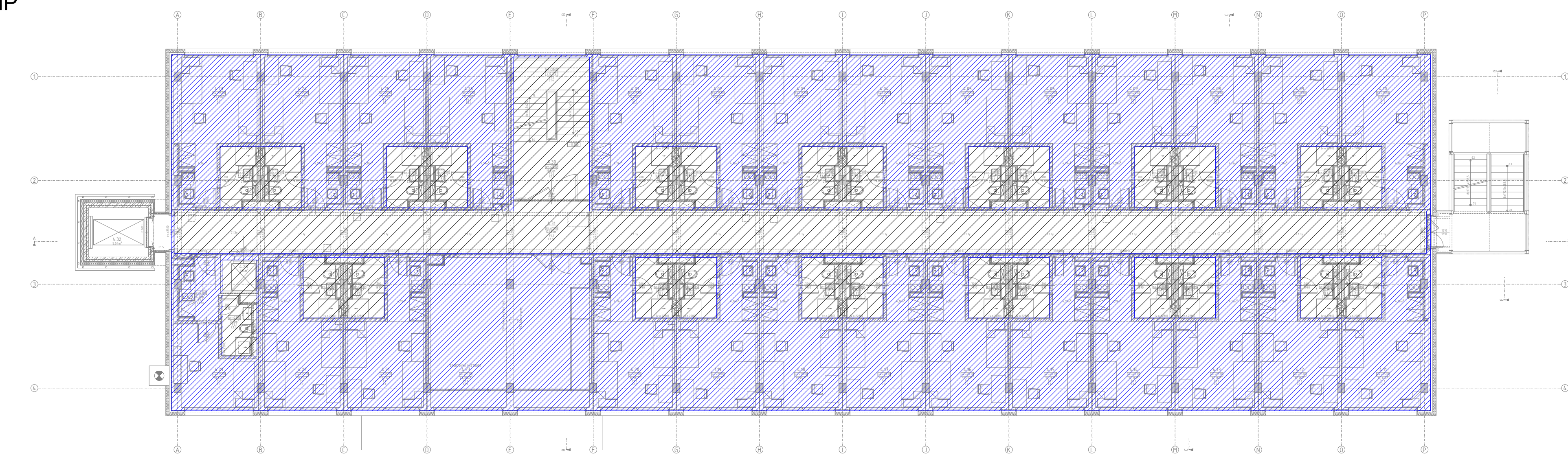
3.NP



4.NP

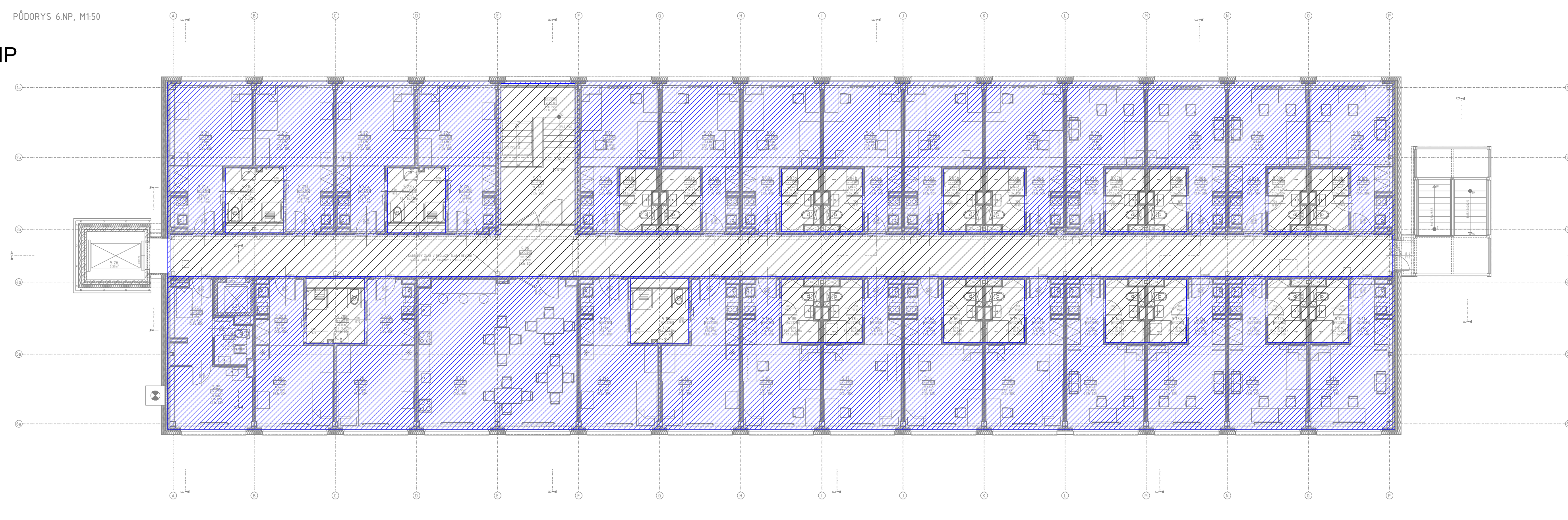


5.NP

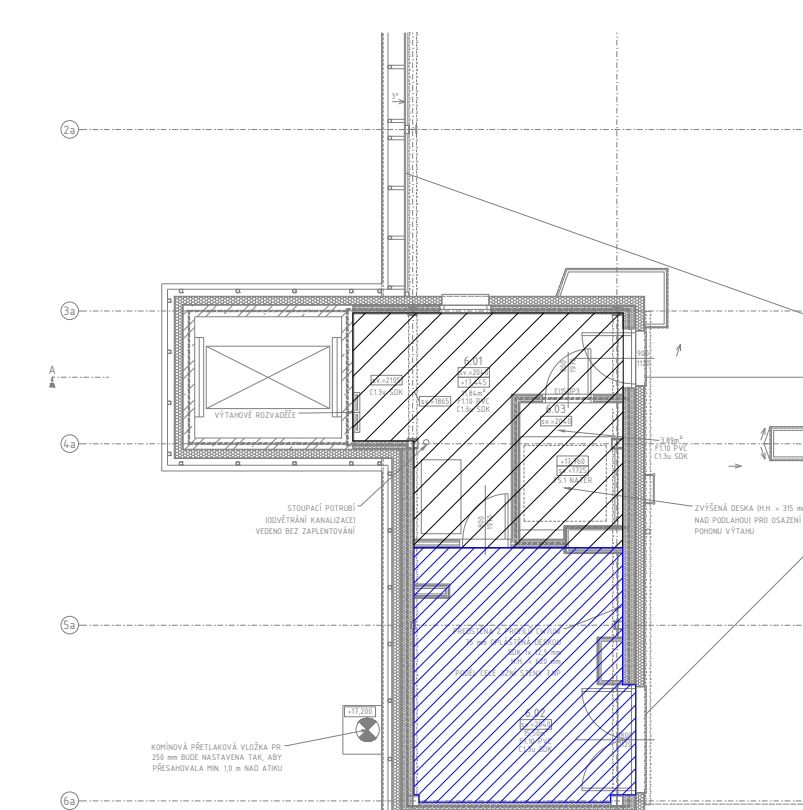


PUDORYS 6.NP, M1:50

6.NP



7.NP



LEDENDA

MVS č. 1		
TRÍDA NEBEZPEČÍ	OH 1 - KOLEJ	OH2 - SKLADY
TLAK NA HLAVICI (bar)	0,35	0,35
INTENZITA (mm/min)	5	5
ÚČINNÁ PLOCHA (m2)	72	144
DOBA ČINNOSTI (min)	60	60
Typ HLAVICE	SP K80 68°C SR	SU K80 68°C SR

 STROJOVNA A NÁDRŽ SHZ

BEZ SHZ

POZNÁMKY:

UMÝVÁRNY A TOALETY NENÍ NUTNÉ DLE ČSN EN 12845 JISTIT SYSTÉMEM SHZ.